

CHERRY VALLEY HISTORICAL SOCIETY NEWSLETTER  
Summer 2017



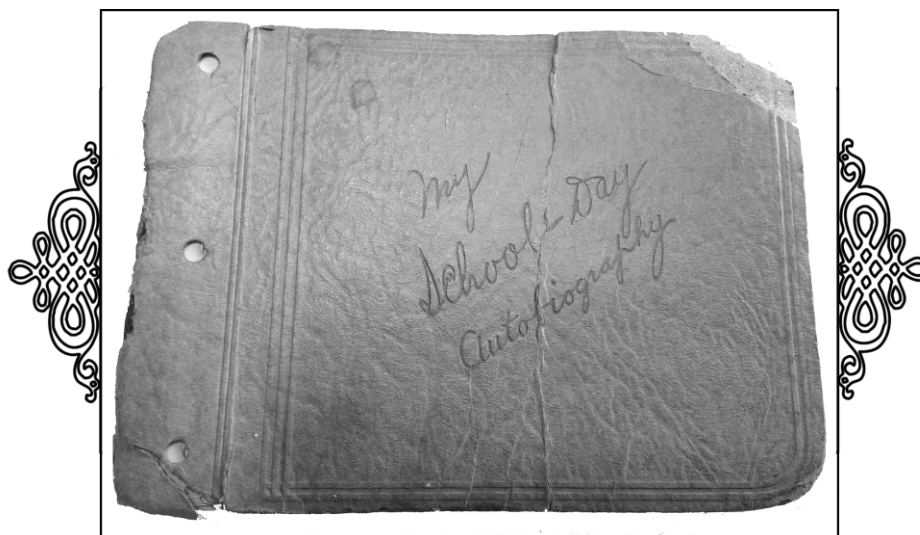
As summer winds down and the new school year begins, we are reminded once again of how precious those school memories are. A little autograph book from our shelves highlights the sweet and innocent days of childhood. Perhaps some of you remember having something similar, or how you planned on what to write in someone else's? These are taken from "My School Days Autobiography" belonging to "Miss Ariel Wilina Cramer, Cherry Valley, IL". It was started in the eighth grade, and is dated from 1926-1930.

If scribbling in albums, remembrance insures,  
With the greatest of pleasure, I'll scribble in yours.  
Your friend, Eleanor J.

May the God of Luck attend you always.  
Charlotte Gannon

In the fireplace of friends, count me as a brick.  
Irene

Together we have studied, together broken rules,  
But mercy, who can help it, in Cherry Valley schools.  
L. M. J.



The following have passed away since our last newsletter:

Ron Gordon Sr.	75	March 2017
Frank Whitehand	86	May 2017



### Cherry Valley School Memories from Barbara Houghton Schwartz

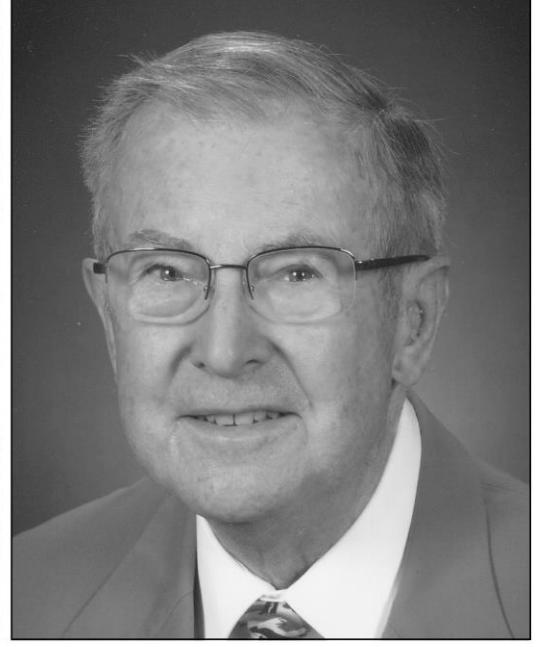
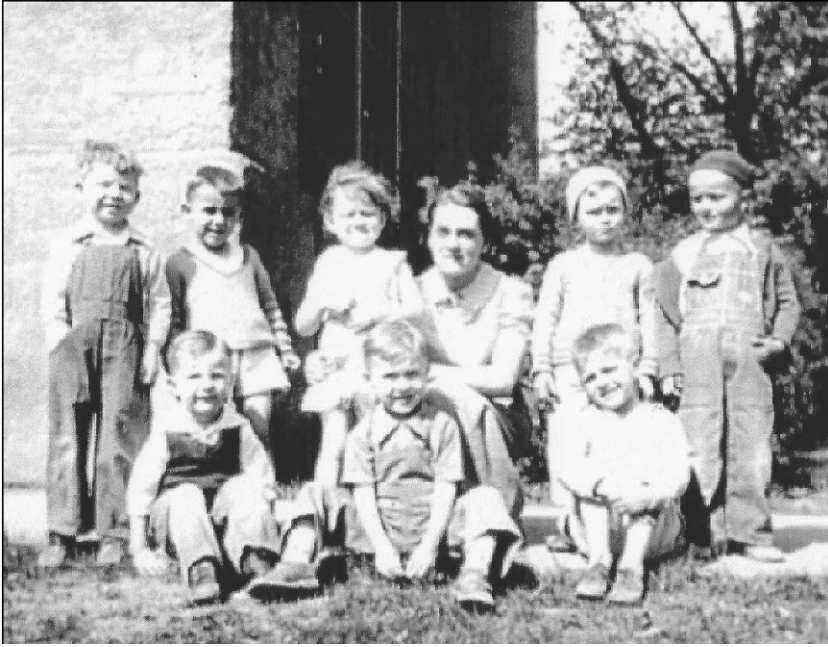
In 1950, 51 and 52, I was a cheerleader at Cherry Valley Grade School along with Alta "Irish" Offenheiser, Leslie Davis, Nancy Brandt, JoAnn Eifer, and Ann Nyman. Ronnie "Peewee" Hollembeak was on the basketball team along with Gary Popham, Ed Bauer, John Fisher, Jerry Nolley, and Denny Rubeck. In our 8<sup>th</sup> grade year they won the Divisional Championship! Peewee was the best basketball player ever!

Irish and I ran for the Cherry Festival Queen also. Irish won, and I came in 2<sup>nd</sup>. We were lifelong friends even after I married and moved to Sacramento, CA. We always kept in touch. I visited her in Huntley and when they were in Florida. I loved her condo in Florida...right on Siesta Key Beach. I

always visited Cherry Valley when I was back and met Peewee there often. They used to have a reunion in the C. V. Park that I did attend several times. Many people I knew would be there. Peewee was always there and usually on the microphone introducing everyone and getting us up on stage to talk about our experiences. Ronnie passed away a few years ago, and a little over a year ago Irish did also. I still cannot accept that they are not here anymore. I live in Arizona now, and will especially miss them so much when I travel back to see my family in Rockford.

I know Tony Myers still lives in Cherry Valley, and John Larson and others that are there may still remember me. Tony was a year ahead of me in school, so he is going to be 80 this year...before me! My brothers and sister also attended school there: Judy, Tom and Roger Houghton. I lived in Cherry Valley through grade school and East High. When I married in 1961, I moved to CA. and spent most of my life there. I have so many wonderful memories and know how lucky I was to grow up and live in Cherry Valley! (photos shared by Barbara)





**Kindergarden class of 1934**

**Frank Whitehand**

Front row: Frank Whitehand, Bruce Nelson, John Ulrich

Back row:

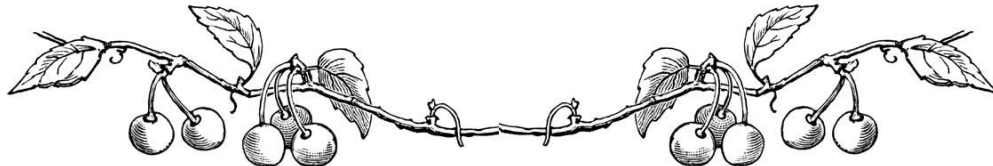
Wayne Kent, Louis Ulrich, Delores Knighton, Miss E. Andrews (teacher), Jack Peacock, and Bob Wilson

During this time I lived in the house my Mom and Dad rented from Horace & Georgia Poulton for, if memory serves me correctly, \$17 per month. Next door lived Mrs. Lloyd, who was Georgia Poulton’s mother.

From “Selected Items From Frank’s Childhood Scrapbook”



Many thanks to the Cherry Valley Board for the bathroom renovation repairs and cleaning. There are just a few more things that need attention, but the progress is wonderful! Also, thanks to Greg Alton for the power washing, and all the work put into planting and mulching in front of the Historical Society. Steve Jeske made new window boxes as the old ones had rotted with age. Beverly Scholz did a great job painting them. Our building is the first thing seen when you enter Cherry Valley, and thanks to all who work at keeping it looking great!



Editor.... Pam Jeske ([golfnsew@aol.com](mailto:golfnsew@aol.com))

Please feel free to drop a line, add some content, share some stories either to my e-mail, the Historical Society’s e-mail ([cv.historical86@frontier.com](mailto:cv.historical86@frontier.com))

Or stop by, leave a note ...have a chat with a member!

Cherry Valley Historical Society, Box 266, Cherry Valley, IL 61016



**Rockford**  
 5112 Linden Rd.  
 1619 Meridian Rd.  
 3722 Baxter Rd.  
 5315 Sandy Hollow Rd. [aplaceforspace.com](http://aplaceforspace.com)

**Belvidere**  
 1821 Chrysler Dr.

**24/7 Self Rental/Payment Station  
 at all Locations**



**Rawson**<sup>TM</sup>  
 Custom Woodworks LLC

**Kitchens • Furniture • Cabinetry  
 Decks • Stairs • Trim • Hardwoods**

Brian & Rachel Rawson 815 **332-9222**

[www.RawsonCustomWoodworks.com](http://www.RawsonCustomWoodworks.com)

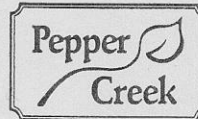
**Countertops • Millwork • Repairs  
 Finishing • Custom Stains • Top Coats  
 Wood Signs • Gift Boxes • Custom Guitars**

**Hours 10 am - 4 pm and By Appointment**

Shop: **4337 South Perryville Rd, Suite 110  
 Cherry Valley, IL 61016**

*1-1/2 miles south of Harrison Ave, south of CherryVale Mall  
 Near I-39 & I-90 Interchange - Rockford exit*

*Email: [info@RawsonCustomWoodworks.com](mailto:info@RawsonCustomWoodworks.com)*



815-332-2103  
 7295 Harrison Ave.  
 Rockford, IL 61112  
[www.peppercreek.com](http://www.peppercreek.com)

*"A natural for plants, gifts, and flowers!"*



**Fitzgerald** SINCE 1914  
 FUNERAL HOME  
 & CREMATORY LTD.

**Family Owned & Operated**  
[www.fitzgeraldfh.com](http://www.fitzgeraldfh.com)



**Riverside Chapel**  
 3910 N. Rockton Av  
 (815) 654-2484



**Mulford Chapel**  
 1860 S. Mulford Rd  
 (815) 226-2273



Thank you to the Cherry Valley Village Hall for their wonderful support and assistance.  
 Please let our sponsors know you saw their advertisement in the newsletter, we appreciate them!

# Cherry Valley Area Men's Club

Lifelong Cherry Valley resident Terry Murphy had always wanted to form a men's club in Cherry Valley with the purpose of helping Cherry Valley area kids and the community in general. In 2011 he put his ideas into action and the Cherry Valley Area Men's Club was established. We are a small non for profit organization that raises money through various events, company sponsors and membership dues. The club donates to various community needs and offers five \$500 scholarships per year towards continuing education. The club meets at 6:30 p.m. the third Monday of every month. Check us out on Facebook "Cherry Valley Men's Association" for meeting locations.

What the Cherry Valley Area Men's club has done?

1. Petitioned and got the speed limit reduced from 55 mph to 45 mph on Harrison (Bypass 20) and Mill Road.
2. Established an educational scholarship program
3. Donated uniforms and equipment for the 4<sup>th</sup> and 5<sup>th</sup> grade boys and girls basketball teams at Cherry Valley School
4. Donated Cheerleading uniforms for the 4<sup>th</sup> and 5<sup>th</sup> grade Cherry School Spirit squad.
5. CVAMA members assist with the yearly food and paper shredding drive at Village Hall.
6. Raised funds for uniforms for the Goldie B. Floberg special athletes.
7. CVAMA worked with the Winnebago County Forest Preserve to design, produce and install rules of the river signs at six county forest preserves.
8. Donated to the 2011 and 2012 downtown Cherry Valley Christmas lights
9. Donated over 2500 Frisbees for the Cherry Valley 4<sup>th</sup> of July parade 2012 thru 2016.
10. Sponsored the Oscar Meyer Weiner Mobile at the 2012 4<sup>th</sup> of July parade.
11. CVAMA annually sponsors the Cherry Valley Family Night Ice skating at Carlson Ice Arena.
12. Sponsored Cherry Valley 4<sup>th</sup> and 5<sup>th</sup> grade basketball players to youth basketball clinics.
13. Mini Golf and silent auction sponsor 2017 Cherry Valley Public Library fundraiser.
14. Sponsoring Wild Time Animal Education Show Cherry Valley Public Library 2017
15. Donated a defibrillator to the Cherry Valley Police department.

If you would like to donate to the club please send your donation to:

Cherry Valley Area Men's Club  
1343 Temple Circle  
Rockford, Il 61108